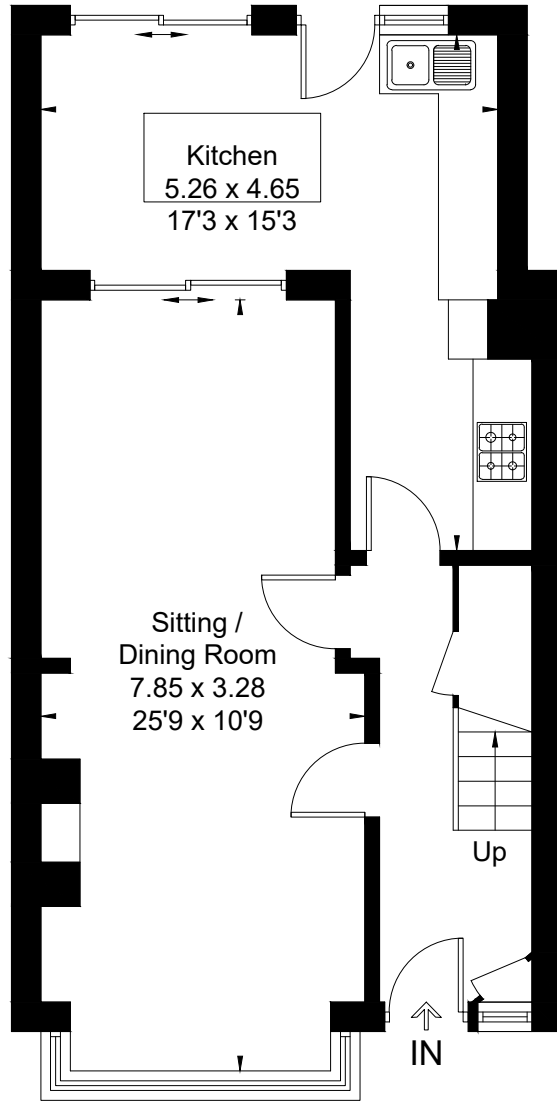
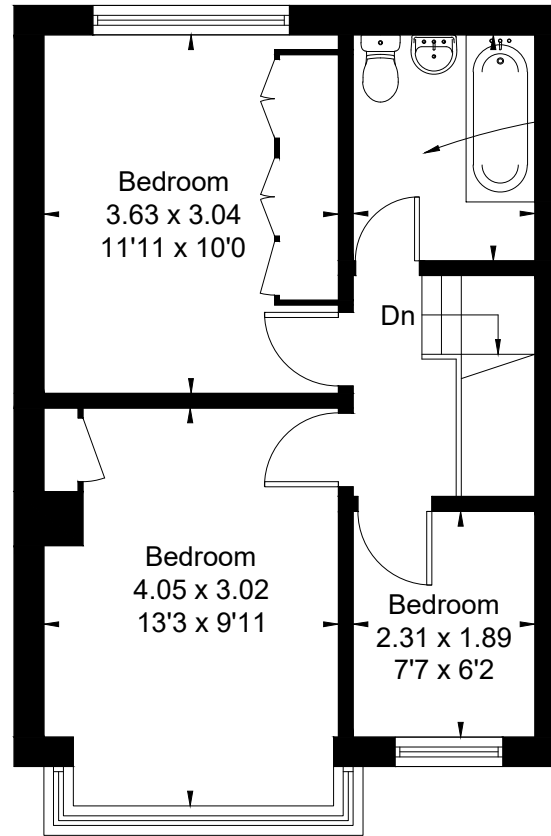


Approximate Floor Area = 88.1 sq m / 948 sq ft  
Outbuilding = 8.2 sq m / 88 sq ft  
Total = 96.3 sq m / 1036 sq ft

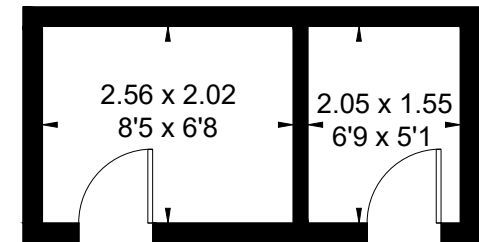


Ground Floor



First Floor

Bathroom  
2.31 x 1.85  
7'7 x 6'1



(Not Shown In Actual  
Location / Orientation)

Outbuilding



This floor plan has been drawn in accordance with RICS Property Measurement 2nd edition.

All measurements, including the floor area, are approximate and for illustrative purposes only. @fourwalls-group.com #63045