



St. John's Villas
Kensington Green, W8

JOWEBSTER



St. John's Villas

Kensington Green, London W8

We are delighted to offer this well-presented four-bedroom house situated in a quiet cobbled mews within the security of Kensington Green.

The house is offered in excellent condition throughout and is laid out over four floors. It is one of the few houses that benefits from direct access down to the two car parking spaces and a private garden. The house comprises 2446 sqft and provides two interconnecting reception rooms, separate dining room, spacious eat-in kitchen, four bedrooms, two with en-suite bathrooms, separate family bathroom and good storage. There is a pretty private garden to the rear.

St Johns Villas is situated in a quiet corner within Kensington Green which benefits from 24-hour security, landscaped gardens, gymnasium and secure underground car parking.



Property Attributes

- 4 Bedrooms
- 3 Bathrooms (2 En-Suite)
- Kitchen
- Two Reception Rooms
- Dining Room
- Gymnasium (Residents Only)
- Landscaped Gardens
- Private Garden
- Balcony
- Underground Car Parking Spaces
- Royal Borough of Kensington & Chelsea
- 24 Hour Security & Concierge

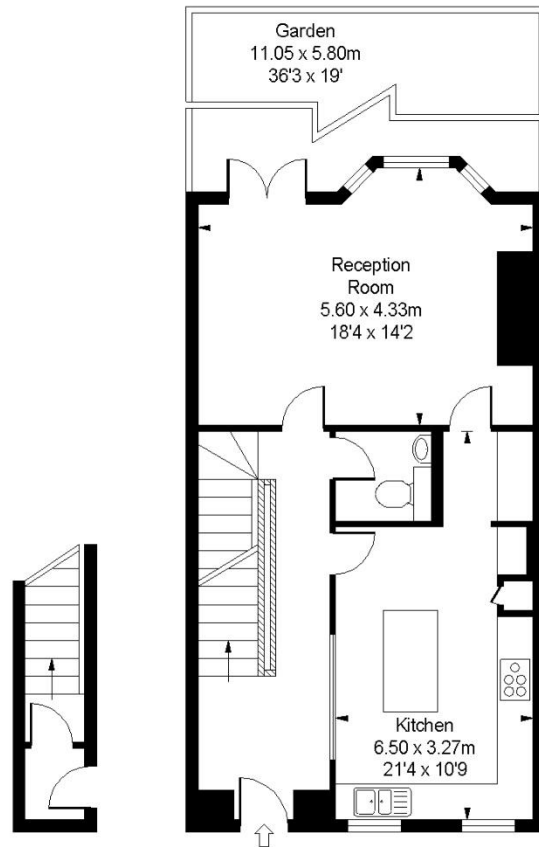
Terms

- £5,000,000.00
- Freehold
- Royal Borough of Kensington and Chelsea
- Service Charge: £8400 p.a. (approx. for 2018)

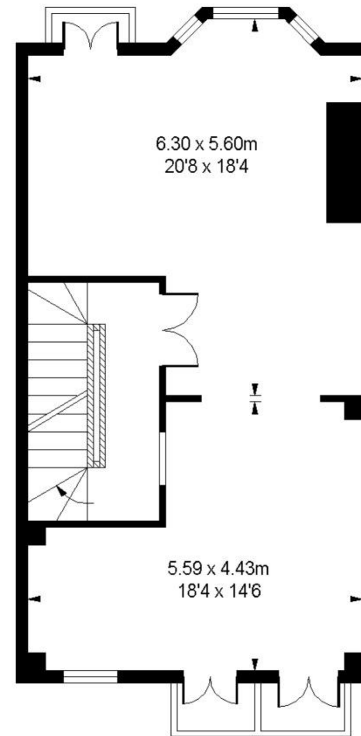


St. Johns Villas,
Kensington Green, W8 5UQ

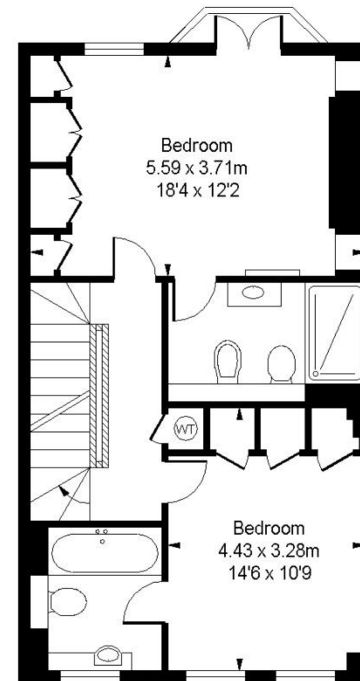
Approximate Gross Internal Area
2446 sq ft / 227.23 sq m



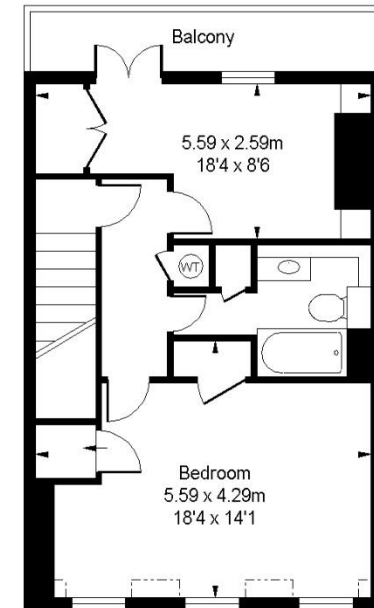
Lower Ground Floor
Approximate Gross Internal Area
47 sq ft / 4.37 sq m



Ground Floor
Approximate Gross Internal Area
633 sq ft / 58.81 sq m



First Floor
Approximate Gross Internal Area
633 sq ft / 58.81 sq m



Second Floor
Approximate Gross Internal Area
621 sq ft / 57.69 sq m

Third Floor
Approximate Gross Internal Area
512 sq ft / 47.56 sq m

ILLUSTRATION FOR IDENTIFICATION PURPOSES ONLY

ALL MEASUREMENTS ARE MAXIMUM, AND INCLUDE WINDOW BAYS AND WARDROBES WHERE APPLICABLE
THIS PLAN MUST NOT BE REPRODUCED BY ANY OTHER PERSON WITHOUT PERMISSION

Not to scale, for guidance only and must not be relied upon as a statement of fact.
All measurements and areas are approximate only and have been prepared in
accordance with the current edition of the RICS Code of Measuring Practice.

0207 349 7055

sales@jowebster.com

www.jowebster.com

Important Notice

These sales particulars are believed to be correct, but their accuracy is not guaranteed, nor do they form any part of a contract. We have not carried out a detailed survey nor tested services, appliances or fittings.
Purchasers must satisfy themselves by inspection or otherwise.